
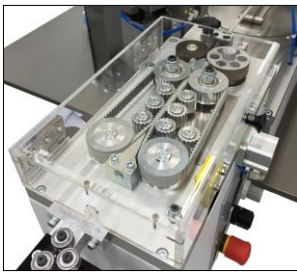




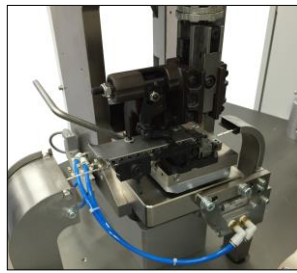
- Up to 4 processing station, flexible configuration to cater for variety of applications
- Dynamic servo drives and intelligent control system
- State-Of-Art communication via TCP/IP technology within machine and its processing stations
- Speed selectable crimping press integrated with 3rd generation Crimp Force Monitor for better quality monitoring
- Programmable servo-drive Cut-Strip module, cover entire wire cross-section using V-Blades
- Radius-Blades and M series-Blades are also available for processing special wire
- Blades from  MECHTRIX Corporation
- Ease of setup using Step-by-Step operation
- Easy to use Operating Software with WireEnds, Products and Applicators database allowing quick change-over, developed to meet the most demanding production schedule
- HMI via touch screen
- Running on Windows 7 OS

Programmable CUT - STRIP - TERMINATE Machine

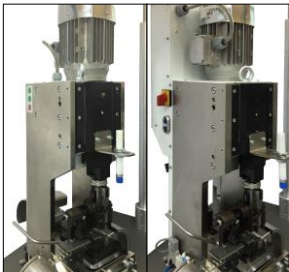
Wirex 33⁺



Belt Driven Wire Launching Unit



Material End Detector and Carrier Cutter Unit



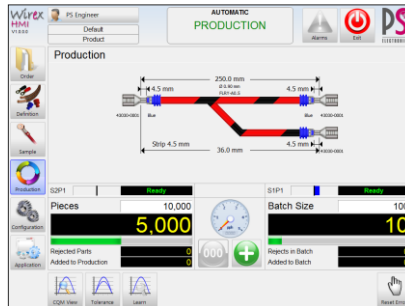
eP-2 / SLP2000E Crimp Module



eS-1 Seal Insertion Module



Double Gripper Module for horizontal / vertical connection

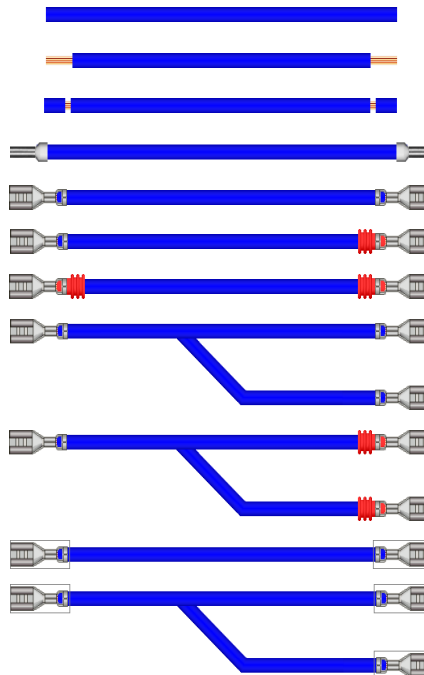


User Friendly Wirex HMI



Technical Specifications:

- Stripping Length : 0mm – 15mm
- Wire Length : 60mm – 65,000mm
- Wire Cross Section : 0.13mm² – 5mm²
- Wire Launching Speed : 0 – 10m/s @ acceleration 50m/s²
- Pre-Feeder : ePF-6 (Optional)
- Terminal Feeding : Side & End Feed
- Crimp Press : eP-2 or SLP2000E (Optional)
- Crimp Press Capacity : 20,000N
- Crimp Force Monitor : 3rd Generation Integrated or SL Kit II
- Seal Unit : Integration prepared for eS-1 or SLU-3000 (Optional)
- Material end detection
- Paper Winder
- Carrier Strip Cutter
- Safety Release Setup Feature
- Air Supply : 6 Bar (90 psi) dried and filtered
- Air Consumption : 0.5 NI/cycle
- Power Supply : 380 – 430VAC (3PH), 50Hz
- Power Consumption : 5.8KW
- Weight : approx. 800 kg
- Dimension : 4M conveyor - 5,730mm (L) x 1,415mm (W) x 1,930mm (H)
- CE-Conformity : Fully complies with all CE and EMC directives
- Specifications are subject to change without notice



WE BELIEVE IN TOTAL CUSTOMER SATISFACTION